



# Solid Choices for Delicate Pumping

JABSCO FLEXIBLE IMPELLER



a xylem brand



# Flexible Impeller Pumps

Pumping delicate, viscous fluids and products that contain solids in suspension can be a daily challenge. There are many types of pumps on the market, but the effects on productivity and product quality can be costly if the wrong type of pump is chosen. Fortunately, Jabsco has a variety of positive displacement **Flexible Impeller Pumps** that are solid choices for the hygienic, food, personal care and industrial chemical industries.

Jabsco **Flexible Impeller Pumps** have excellent priming properties due to an elastomer impeller with flexing vanes, which have the ability to pump at low speeds allowing gentle pumping of delicate fluids, liquids with suspended hard or soft solids and air-entrained products.







# Jabsco Flexible Impeller Pumps

## Flexible Impeller Pumps

- Based on technology that Jabsco first patented over 80 years ago
- The output flow is smooth, steady and pulsation-free
- The gentle pumping action will not break down shear-sensitive or fragile liquids
- Cream fillings, jams, sauces and pie fillings that contain fruit pieces are handled with ease

### Ease of maintenance

- Single moving part (the impeller) greatly simplifies maintenance
- Just four screws to remove the end cover for easy inspection and replacement of impeller if necessary
- Four more screws allows access to maintain mechanical seals

### Rugged design

Jabsco pumps are regarded by many as the best of their type on the market with:

- 316 SS wetted parts, standard on Jabsco Flexible Impeller Pumps
- Long-life, durable flexible impellers
- Market-leading mechanical seals are external to pumped media
- High grade large bearings in pedestal pump variants
- Wide diameter precision ground shafts
- Design allows pump to pass hard particles, such as bones and seeds, without stalling

### Installation benefits

- Compact pump size - more space efficient than alternative pumping technologies
- Reversible operation - makes the pump adaptable to differing situations
- High dry-priming ability of up to five meters - allowing for convenient and safe installation positions for bulk transfer and decanting

### Especially suited for:

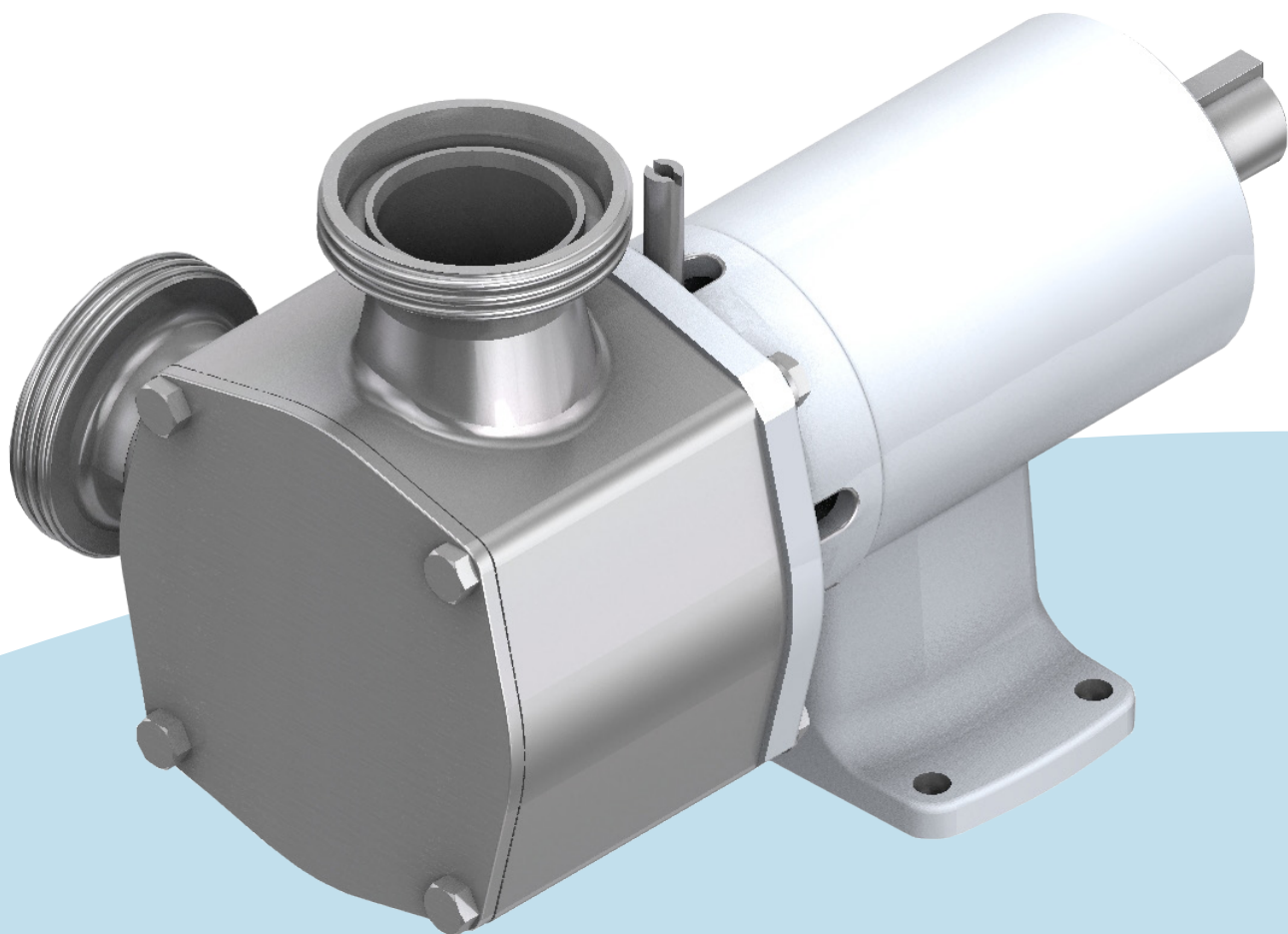
- Ingredient unloading and transfer
- Tank filling and emptying
- Recirculation and mixing
- Portion and container filling
- Sampling, filtration and more
- Brine injection

### Applications include:

- Food and beverage
- Personal care products and cosmetics
- Industrial fluid products

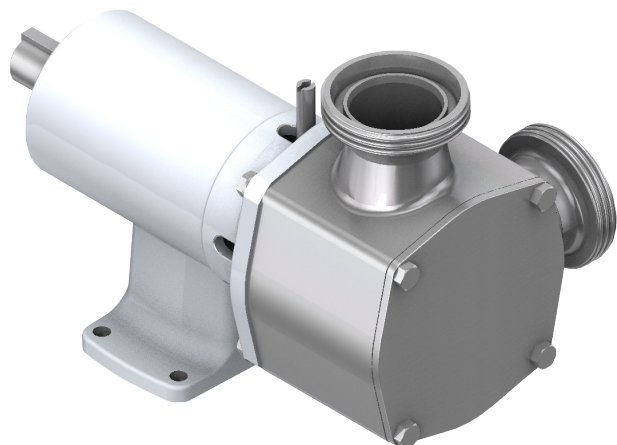
### Features & Options

- Dry self-priming
- Chemically compatible 316 grade stainless steel parts
- Polished internal surfaces
- Hygienic elastomer impeller leaves no taste or odor
- Standard and hard face mechanical seals
- Flushing arrangement for mechanical seals
- Elastomer materials certified to latest US 3A Standard and FDA, EN1935: 2004 for EPDM and nitrile compounds
- Pump design certified to latest US 3A Standard
- Variety of port and impeller material options
- Rugged heavy-duty construction
- Serviceable end covers, wear plates, impellers, mechanical seals, shafts bearings
- 3A variants with hygienic impeller compounds
- Port options - tri-clamp, IDF, ACME 3A, DIN 11851, SMS, RJT





# Solid Choices for Delicate Pumping



## 28 Series Flexible Impeller Pumps

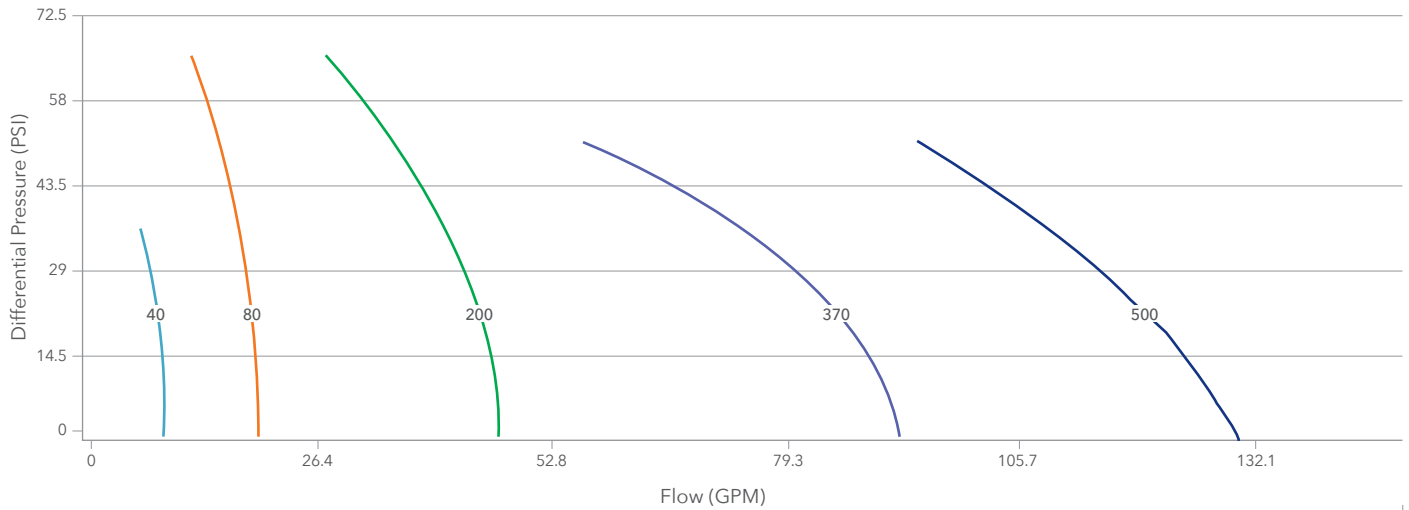
The simple design of the 28 series, along with a wide offering of options, ensures there is a variant for every application along with the assurance of long life.

MODEL	MOUNTING	IEC MOTOR FLANGE/FRAME SIZE	MAX SOLIDS SIZE	SIZE (LxWxH)	DIMENSIONS FOOT TO SHAFT	PEDESTAL DRIVE SHAFT OD/ CLOSE COUPLED STUBSHAFT ID	WEIGHT
28200	Pedestal	N/A	0.31"	6.65" x 4.41" x 5.79"	2.81"	0.55"	6.39 lbs
28220	Close couple	B3/B14/IEC80	0.31"	4.57" x 4.41" x 4.41"	N/A	0.75"	5.51 lbs
28300	Pedestal	N/A	0.47"	7.13" x 4.76" x 6.30"	3.14"	0.75"	9.70 lbs
28320	Close couple	B3/B14/IEC80	0.47"	5.31" x 4.77" x 4.77"	N/A	0.75"	7.72 lbs
28400	Pedestal	N/A	0.63"	10.24" x 6.18" x 7.48"	3.53"	0.94"	20.72"
28420	Close couple	B3/B14/IEC90	0.63"	6.50" x 6.18" x 6.18"	N/A	0.94"	14.77 lbs
28500	Pedestal	N/A	0.71"	13.03" x 7.32" x 8.58"	3.93"	1.22"	32.41 lbs
28520	Close couple	B3/B14/IEC100	0.71"	7.56" x 7.32" x 7.32"	N/A	1.10"	22.49 lbs
28600	Pedestal	N/A	0.71"	18.74" x 7.80" x 8.82"	3.93"	1.26"	44.09 lbs
28620	Close couple	B3/B14/IEC132	0.71"	11.10" x 7.80" x 7.80"	N/A	Use special motor shaft	33.07 lbs

\* Check hydraulics when handling viscous fluids.

This is an approximate selection guide only. Full details of flow, pressure, viscosity and suction conditions are required to enable exact selection.

Pump Size and Flow at 1450 RPM



PUMP SIZE	PORT SIZE	DRY PRIME MAX HEIGHT	MAX VISCOSITY	MAX SPEED (STD. PRESSURE/ HIGH PRESSURE)	MAX PRESSURE IMPELLER (STD. PRESSURE/ HIGH PRESSURE)	MAX PRESSURE PUMP	MAX ABSORBED POWER (STD. PRESSURE/ HIGH PRESSURE)	STARTING TORQUE (STD. PRESSURE/ HIGH PRESSURE)
40	1"	16 ft	10000cP / 5.3 GPM	2500 RPM / 1450 RPM	29 PSI / 44 PSI	44 PSI	0.32kW / 0.21kW	2.1 Nm / 4.1 Nm
40	1"	16 ft		1450 RPM	29 PSI / -	24 PSI	0.25kW	2.1 Nm / -
80	1"	16 ft	10000cP / 13.2 GPM	2500 RPM / 1450 RPM	41 PSI / 64 PSI	64 PSI	0.94kW / 0.52kW	6.5 Nm / 10.7 Nm
80	1"	16 ft		1450 RPM	38 PSI / -	24 PSI	0.42kW	6.5 Nm / -
200	1 1/2"	16 ft	10000cP / 39.6 GPM	2500 RPM / 1450 RPM	42 PSI / 65 PSI	65 PSI	1.6kW / 1.1kW	13 Nm / 35 Nm
200	1 1/2"	16 ft		1450 RPM	39 PSI / -	20 PSI	1kW	13 Nm / -
370	2"	15 ft	20000cP / 79.3 GPM	1500 RPM	36 PSI / 45 PSI	45 PSI	1.7kW / 2.4kW	33.2 Nm / 37.3 Nm
370	2"	16 ft		1450 RPM	18 PSI / 36 PSI	15 PSI	1.7kW / 1.7kW	18.3 Nm / 33.2 Nm
500	2 1/2"	16 ft	20000cP / 105.7 GPM	1500 RPM	29 PSI / 55 PSI	55 PSI	2.5kW / 5.6kW	29.2 Nm / 31.9 Nm
500	2 1/2"	16 ft		1500 RPM	29 PSI / 55 PSI	44 PSI	2.5kW / 5.6kW	29.2 Nm / 31.9 Nm

# Xylem |'zīləm|

- 1) The tissue in plants that brings water upward from the roots;
- 2) a leading global water technology company.

We're a global team unified in a common purpose: creating advanced technology solutions to the world's water challenges. Developing new technologies that will improve the way water is used, conserved, and re-used in the future is central to our work. Our products and services move, treat, analyze, monitor and return water to the environment, in public utility, industrial, residential and commercial building services, and agricultural settings. With its October 2016 acquisition of Sensus, Xylem added smart metering, network technologies and advanced data analytics for water, gas and electric utilities to its portfolio of solutions. In more than 150 countries, we have strong, long-standing relationships with customers who know us for our powerful combination of leading product brands and applications expertise with a strong focus on developing comprehensive, sustainable solutions.

**For more information on how Xylem can help you, go to [www.xylem.com](http://www.xylem.com)**



**Xylem Inc. – USA**  
17942 Cowan  
Irvine, CA 92614

**Xylem Inc. – UK**  
Harlow Innovation Park,  
London Road,  
Harlow, Essex, CM17 9LX

**Xylem Inc. – CHINA**  
30/F Tower A, 100 Zunyi Road,  
Shanghai 200051

**Xylem Inc. – HUNGARY KFT**  
2700 Cegléd  
Külso-Káta út 41

**Xylem Inc. – AUSTRALIA**  
2/2 Capicure Drive  
Eastern Creek, NSW 2766

**[www.xylem.com/jabsco](http://www.xylem.com/jabsco)**

© 2022 Xylem Inc. All rights reserved  
Jabsco is a trademark of Xylem Inc. or one of its subsidiaries  
F100-475 Rev. A 05/2022